

# Operation Manual

## Airless Sprayer

### GBS-8000



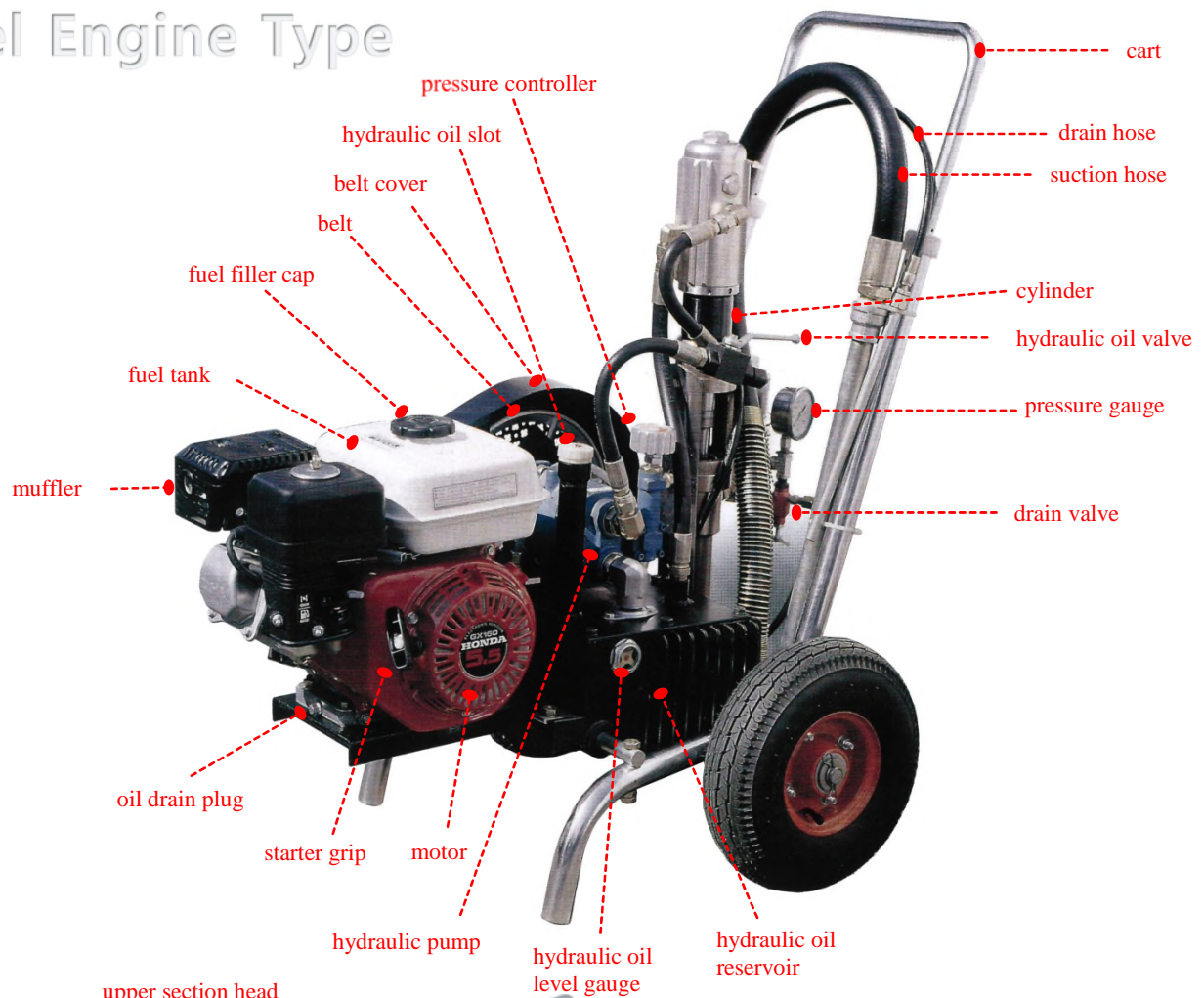
You can interchange power with  
2HP explosion proofed type  
electric motor so conveniently



You can interchange power with  
Honda 5.5HP gasoline engine  
so conveniently



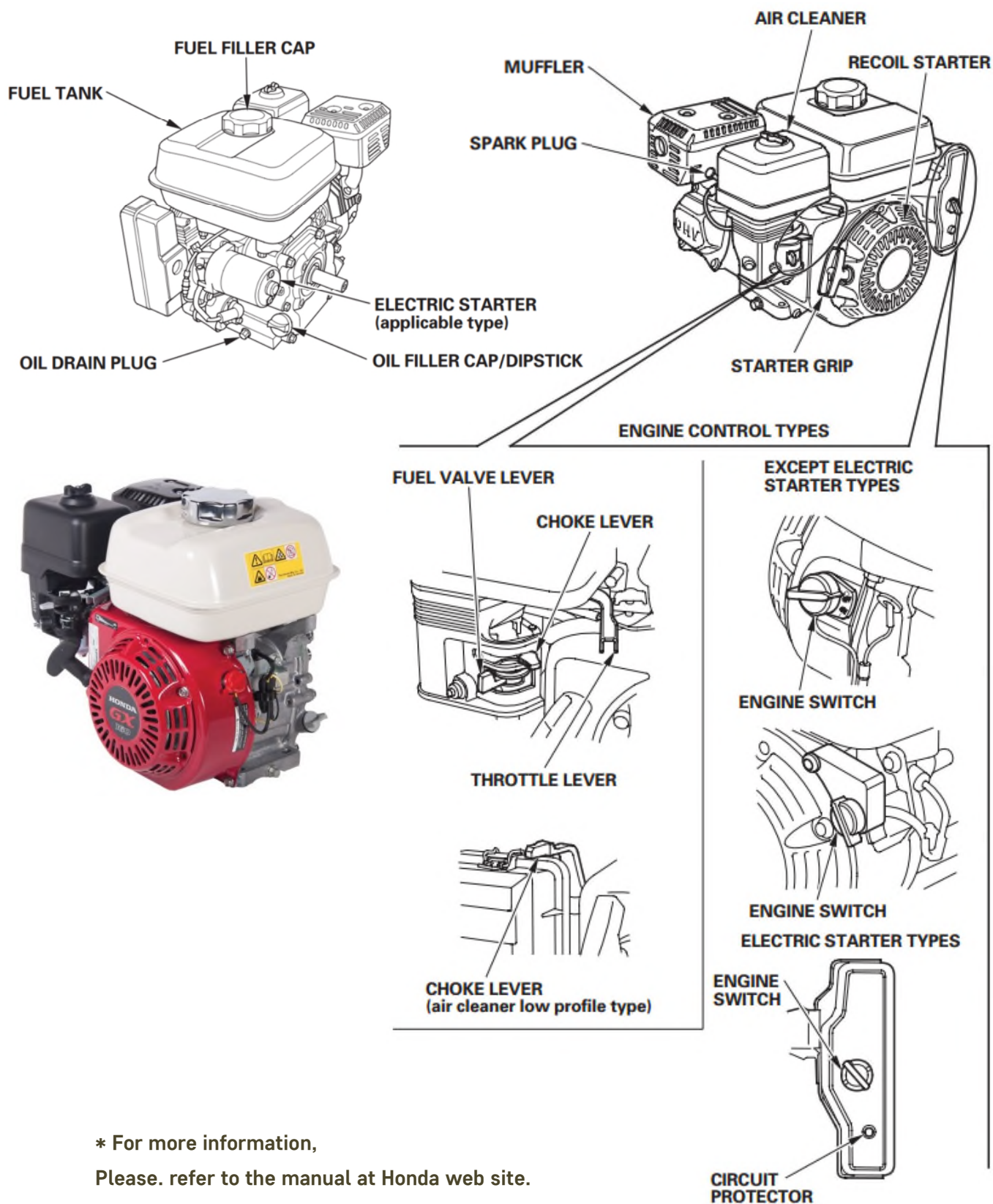
# Fuel Engine Type



# Electric Motor Type



## Fuel Engine : HONDA GX-160



\* For more information,  
Please refer to the manual at Honda web site.

## 1. Specification of Spray Machine

Model Description	YH-8000		YH-12000		Remarks
	Engine	Motor	Engine	Motor	
Power requirement (HP)	5.5	2(220V.60Hz)	5.5	2	Honda
Free-flow output(lpm)	6.5	4	7.6	5.3	
Max. working pressure (kg/cm <sup>2</sup> )	248	225	207	181	
Max. tip size	1gun, .036" 4guns, .019"	1gun, .031" 4guns, .021"	1gun, .043" 2guns, .027" 3guns, .019"	1gun, .031" 2guns, .023" 3guns, .015"	
Hose Length (Max.)	150M		100M		
Weight(Net)	58kg	63kg	55kg	60kg	
Dimension(mm)	910 x 600 x 1,000	900 x 600 x 1,000	910 x 600 x 820	900 x 600 x 820	

## 2. Features

- ▶ Easy movement during work and easy power interchange of electricity or gasoline engine
- ▶ Satisfying all condition of work and save the cost of maintenance by steady equipment
- ▶ Simplification of power transfer equipment makes flexibility and minimize the cause of trouble basically.
- ▶ You can use water base, oil base or other base of paint variously.

## 3. Caution & Warning

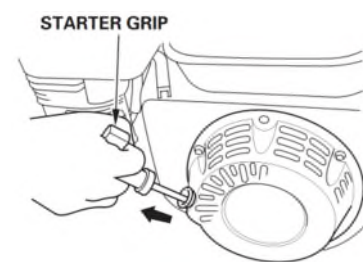
1. Moving parts can pinch, cut or amputate fingers and other body parts. so, be careful extremely.
2. The spray pressure is extremely high. Do not spray to people.  
Do not use hand for testing pressure. Extremely dangerous !
3. Do not remove the belt cover while using.
4. Before inspection for machine, make sure the pressure is Zero.
5. The Max. pressure is 240kgf/cm<sup>2</sup>. Therefore, extra parts or equipment you want to add on the pump, must be considered the pressure.
6. Always wear appropriate gloves, eye protection, and a respirator or mask when working.
7. Do not alter or modify equipment. Alterations or modifications may create safety hazards.



## 4. Setup

1. Connect Spray hose with the pump tightly.
2. Check the engine oil and fuel level. If see shortage, fill more according to manual.
3. Check if the belt condition is o.k.
4. Open the pressure controller, hydraulic oil valve, drain valve.
5. Place the suction hose & the drain hose in the pail with chemical material.

6. Start engine : Pull the starter grip lightly until you feel resistance,  
then pull briskly in the direction of the arrow as shown.  
Return the starter grip gently.



7. After 1~2 min. engine running,  
when material drains out through the drain hose,  
close the drain valve.  
(\* It is the process for removing Air inside. \* Do it for 3~5 min. at winter or cold weather.)
8. After pressure goes up, and when the piston stops moving,  
set the right pressure you want to use by turning the pressure controller.  
(Clockwise rotation : pressure ↑ / Counterclockwise rotation : pressure ↓)
9. While using the pump, check the fuel level and chemical material. If see shortage, refill again.
- 10., Clean the pump as soon as finishing using.

## 5. Clean Up

1. Make sure first that there is no paint or PU inside the pump and hoses.
2. Place the suction hose, spray hose, drain hose in thinner pail.
3. Run the machine at the middle level pressure.  
(while thinner is circulating from suction hose to spray hose, it is cleaned)
4. Open the drain valve for cleaning drain hose.
5. Separate and disassemble the suction strainer, surge tank, gun(tip), and then clean thoroughly.

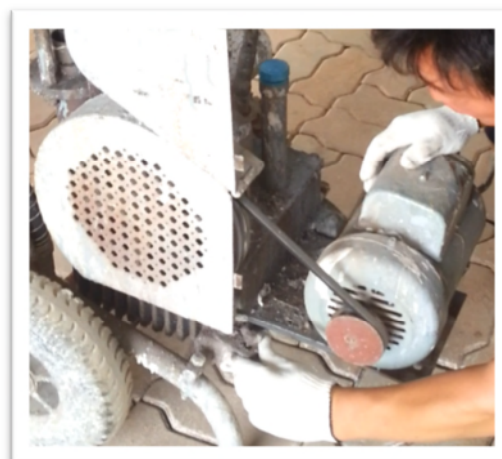
## 6. Simple Problem Solution & Storage

1. When the upper section head is not running at initial operation, it is caused by air inside the hydraulic oil line.
  - Disassemble the head bolt, and pressure hard inside parts, and then restart.
2. When suction hose is not sucking, clean the machine with thinner according to the cleaning method, and restart.
  - If it doesn't work even after cleaning, disassemble the pump lower section, and clean all parts, and reassemble.
3. When the belt is loose or has abrasion, exchange with brand-new belt. (Belt spec. : A type Number 42)
4. When moving, storage, uploading, loading, unloading, separate the engine from the main body.

## 7. Separating Engine from Main base



① open the belt cover



② Unscrew the bolt, and open hook.



③ Slightly unload the motor, and untie the belt from the motor.

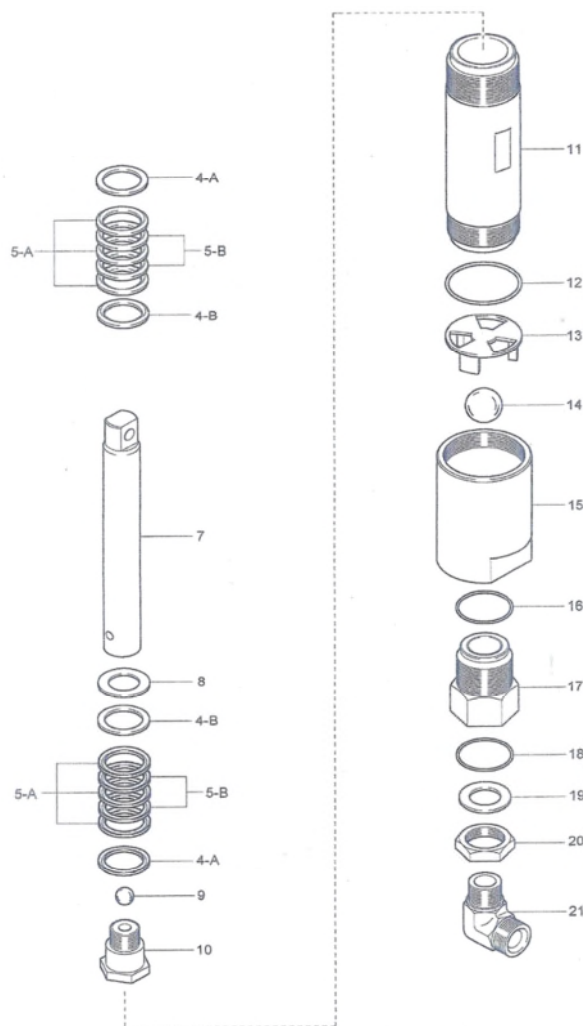


④ Separate the motor from main body.

## [ Part Diagram and number of YH-8000 ]

### \* Lower Pump parts list

No.	Part No.	Description	Qty
4-A	614-1254	Gland (Female)	2
4-B	614-1255	Gland (Male)	2
5-A	614-1256	V-packing, Gur/Teflon	6
5-B	614-1257	V-packing, Leather	4
7	614-1143	Displacement Rod	1
8	614-1260	Spacer-washer	1
9	614-1146	Piston Ball	1
10	614-1145	Piston Valve	1
11	614-1142	Cylinder Sleeve	1
12	614-1147	Sleeve 'O'ring	1
13	614-1150	Ball Guide	1
14	614-1151	Suction Ball	1
15	614-1153	Suction Valve Housing	1
16	614-1157	'O'ring	1
17	614-1152	Suction Valve	1
18	614-1270	'O'ring	1
19	614-1271	Washer	1
20	614-1272	Nut	1
21	614-1273	Elbow	1



### \* Surge Tank parts list

No.	Part No.	Description	Qty
1	614-2201	Filter Cap	1
2	614-2202	Spring	1
3	614-2203	Ball	1
4	614-2204	Surge Filter, 60M	1
5	614-2205	Gasket	1
6	614-2206	Nipple	1
7	614-2207	Filter Body	1
8	614-2208	Nipple, outlet	1
9	614-2214	Nipple, outlet	1
10	614-2213	Swivel Nipple	1
11	614-2216	Cap	1
12	614-2218	Cap	1
13	614-2215	PLUG	1
14	614-2212	Oil pressure gauge	1
15	614-0023	T-socket	1
16	614-0079	Nipple	1
17	614-2211	Drain Valve	1

